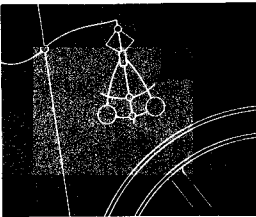

Contents

1

An Overview and Brief History of Feedback Control 1

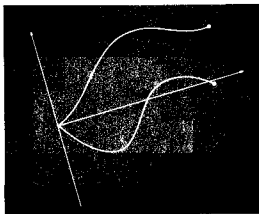
- 1.1 Introduction 1
- 1.2 A First Analysis of Feedback 3
- 1.3 A Brief History 6
- 1.4 An Overview of the Book 12
- Problems 13



2

Dynamic Models and Dynamic Response 17

- 2.1 Introduction 17
- 2.2 Dynamics of Mechanical Systems 19
- 2.3 Models of Electric Circuits 29
- 2.4 Models of Electromechanical Systems 34
- 2.5 Elementary Aspects of Other Dynamic Systems 41
 - 2.5.1 Heat Flow 41
 - 2.5.2 Incompressible Fluid Flow 42
- 2.6 Linearization, Amplitude Scaling, and Time Scaling 47
 - 2.6.1 Small-Signal Linearization 48
 - 2.6.2 Linearization by Feedback 51
 - 2.6.3 General Formulas for Linearization and Scaling 51



- 2.7 A Review of Dynamic Response 52
 - 2.7.1 Introduction to the Laplace Transform 53
 - 2.7.2 The Block Diagram 60
 - 2.7.3 Poles and Zeros 69
 - 2.7.4 Time-Domain Specifications in Terms of Poles and Zeros 73
 - 2.7.5 Effects of an Additional Zero and an Additional Pole 78
- 2.8 Obtaining Models from Experimental Data 85
 - 2.8.1 Models from Transient Response Data 86
- Summary 90
- Problems 91

3

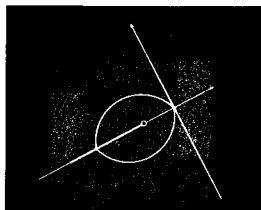
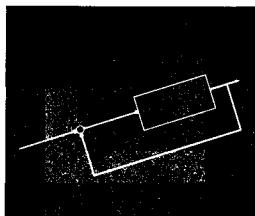
Basic Principles of Feedback 107

- 3.1 A Case Study of Speed-Control 108
 - 3.1.1 Disturbance Rejection 109
 - 3.1.2 Effects of Gain Changes 111
 - 3.1.3 Dynamic Tracking 113
- 3.2 Types of Feedback 116
 - 3.2.1 Proportional Feedback 116
 - 3.2.2 Integral Feedback 118
 - 3.2.3 Derivative Feedback 119
 - 3.2.4 PID Controllers 119
- 3.3 Steady-State Tracking and System Type 125
- 3.4 Stability 136
 - 3.4.1 Bounded-Input-Bounded-Output Stability 137
 - 3.4.2 Routh's Stability Criterion 138
- Summary 143
- Problems 144

4

The Root-Locus Design Method 155

- 4.1 Introduction 155
- 4.2 Guidelines for Sketching a Root Locus 160
- 4.3 Selected Illustrative Root Loci 172
- 4.4 Selecting Gain from the Root Locus 196

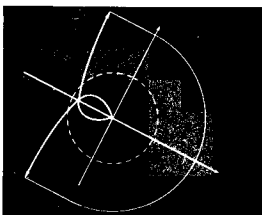


- 4.5 Dynamic Compensation: The Lead and Lag Networks 199
- 4.6 Extensions of the Root Locus 206
 - 4.6.1 Time Delay 207
 - 4.6.2 Loci versus Other Parameters 211
 - 4.6.3 Zero-Degree Loci for Negative Parameters 214
 - 4.6.4 Use of the Root Locus in the Analysis of Nonlinear Systems 217
- 4.7 Computer-Aided Graphing of the Root Locus 224
 - Summary 226
 - Problems 226

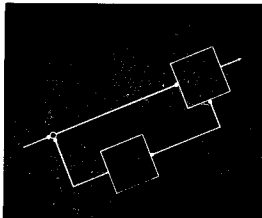
5

The Frequency-Response Design Method 243

- 5.1 Introduction 243
- 5.2 Frequency Response 244
 - 5.2.1 Bode Plot Techniques 247
 - 5.2.2 Steady-State Errors 259
- 5.3 Specifications 260
- 5.4 Stability 261
- 5.5 The Nyquist Stability Criterion 265
- 5.6 Stability Margins 280
 - 5.6.1 Multivariable Systems 289
- 5.7 Bode's Gain-Phase Relationship 291
- 5.8 Closed-Loop Frequency Response 295
- 5.9 Compensation 296
 - 5.9.1 PD Compensation 297
 - 5.9.2 Lead Compensation 299
 - 5.9.3 PI Compensation 303
 - 5.9.4 Lag Compensation 303
 - 5.9.5 PID Compensation 309
 - 5.9.6 Summary of Compensation Characteristics 312
- 5.10 Alternative Presentation of Data 312
- 5.11 Sensitivity 318
 - 5.11.1 Sensitivity Function 321
 - 5.11.2 Stability Robustness 327
- 5.12 Time Delay 332
- 5.13 Obtaining a Pole-Zero Model from Frequency-Response Data 333
 - Summary 336
 - Problems 337



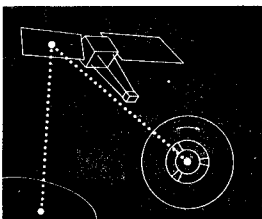
6



State-Space Design 361

- 6.1 Introduction 361
- 6.2 System Description 362
 - 6.2.1 Block Diagrams and State-Space 369
 - 6.2.2 State Transformations 371
 - 6.2.3 System Transfer Functions 372
 - 6.2.4 Poles, Zeros, and Eigenvalues from the State-Space Description 374
- 6.3 Control Law Design for Pole Placement 377
- 6.4 Selection of Pole Locations for Good Design 387
 - 6.4.1 Comments on the Methods 396
- 6.5 Estimator Design 397
 - 6.5.1 Full-Order Estimators 397
 - 6.5.2 Reduced-Order Estimators 405
 - 6.5.3 Estimator-Pole Selection 409
- 6.6 Compensator Design: Combined Control Law and Estimator 412
- 6.7 Introduction of the Reference Input 424
 - 6.7.1 Servodesign 426
- 6.8 Polynomial Solution 433
- 6.9 Integral Control 439
 - 6.9.1 Internal Model Control 441
- 6.10 Design for Systems with Pure Time Delay 448
- 6.11 Lyapunov Stability 451
 - Summary 457
 - Appendix 6A: Solution of State Equations 459
 - Appendix 6B: Controllability and Observability 463
 - Appendix 6C: Ackermann's Formula for Pole Placement 470
 - Problems 473

7



Control-System Design: Principles and Case Studies 491

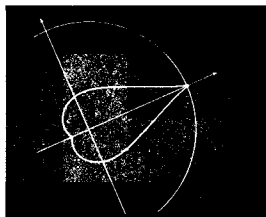
- 7.1 Introduction 491
 - 7.1.1 An Outline of Control-System Design 491
- 7.2 Design of a Satellite's Attitude Control 497
- 7.3 Lateral and Longitudinal Control of a Boeing 747 523
 - 7.3.1 Yaw Damper 525

- 7.3.2 Altitude-Hold Autopilot 538
- 7.4 Control of the Fuel-Air Ratio in an Automotive Engine 546
- 7.5 Control of a Digital Tape Transport 555
 - Summary 574
 - Problems 574

8

Digital Control 585

- 8.1 Introduction 585
- 8.2 Theoretical Background 586
 - 8.2.1 z Transform 586
 - 8.2.2 z Transform Inversion 587
 - 8.2.3 Relationship between s and z 591
 - 8.2.4 Final-Value Theorem 593
- 8.3 Continuous Design 594
 - 8.3.1 Digitization Procedures 594
 - 8.3.2 Design Example 599
 - 8.3.3 Applicability Limits of Method 601
- 8.4 Discrete Design 601
 - 8.4.1 Analysis Tools 601
 - 8.4.2 Feedback Properties 605
 - 8.4.3 Design Example 605
 - 8.4.4 Design Comparison 607
- 8.5 State-Space Design Methods 608
- 8.6 Hardware Characteristics 612
 - 8.6.1 Analog-to-Digital (A/D) Converters 612
 - 8.6.2 Digital-to-Analog (D/A) Converters 613
 - 8.6.3 Analog Prefilters 613
 - 8.6.4 The Computer 615
- 8.7 Word-Size Effects 616
 - 8.7.1 Random Effects 616
 - 8.7.2 Systematic Effects 618
- 8.8 Sample-Rate Selection 618
 - 8.8.1 Tracking Effectiveness 619
 - 8.8.2 Disturbance Rejection 620
 - 8.8.3 Plant Resonances 620
 - 8.8.4 Parameter Sensitivity 621
 - 8.8.5 Control-System Design Methodology 621
- Summary 622
- Problems 622



Appendix A: Laplace Transforms 633

Appendix B: A Review of Complex Variables 636

- B.1 The Definition of a Complex Number 636
- B.2 Algebraic Manipulations 638
- B.3 Graphical Evaluation of Magnitude and Phase 639
- B.4 Differentiation and Integration 641
- B.5 Euler's Relations 641
- B.6 Analytic Functions 642
- B.7 Cauchy's Theorem 642
- B.8 Singularities and Residues 642
- B.9 Residue Theorem 644
- B.10 The Argument Principle 644

Appendix C: Summary of Matrix Theory 647

- C.1 Matrix 647
- C.2 Elementary Operations on Matrices 647
- C.3 Trace 648
- C.4 Transpose 648
- C.5 Matrix Inverse and Determinant 649
- C.6 Properties of the Determinant 650
- C.7 Inverse of Block Triangular Matrices 651
- C.8 Special Matrices 651
- C.9 Rank 652
- C.10 Characteristic Polynomial 652
- C.11 The Cayley-Hamilton Theorem 653
- C.12 Eigenvalues and Eigenvectors 653
- C.13 Similarity Transformations 653
- C.14 Matrix Exponential 654
- C.15 Fundamental Subspaces 655
- C.16 Singular Value Decomposition 655
- C.17 Positive Definite Matrices 656

References 657

Index 663
